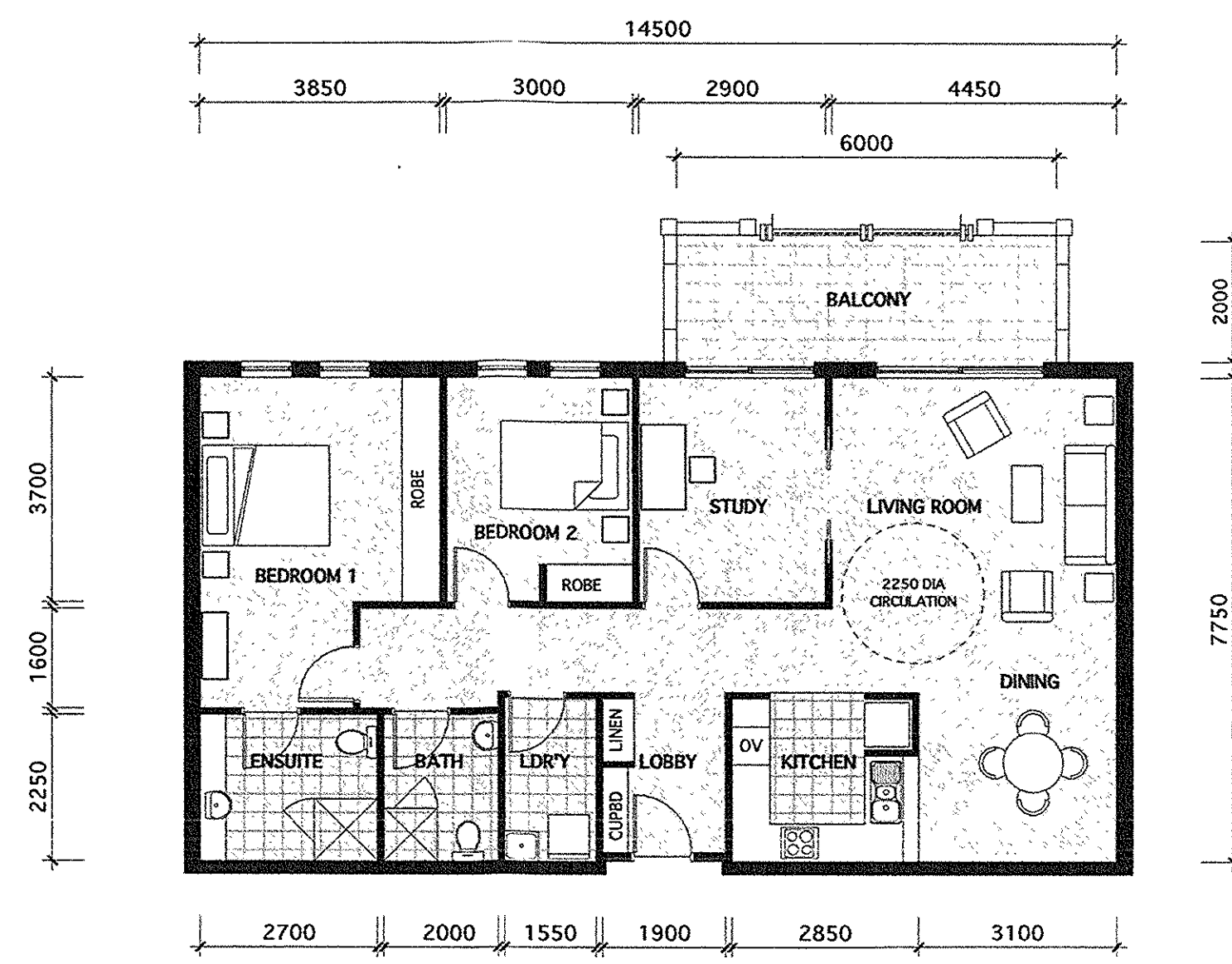
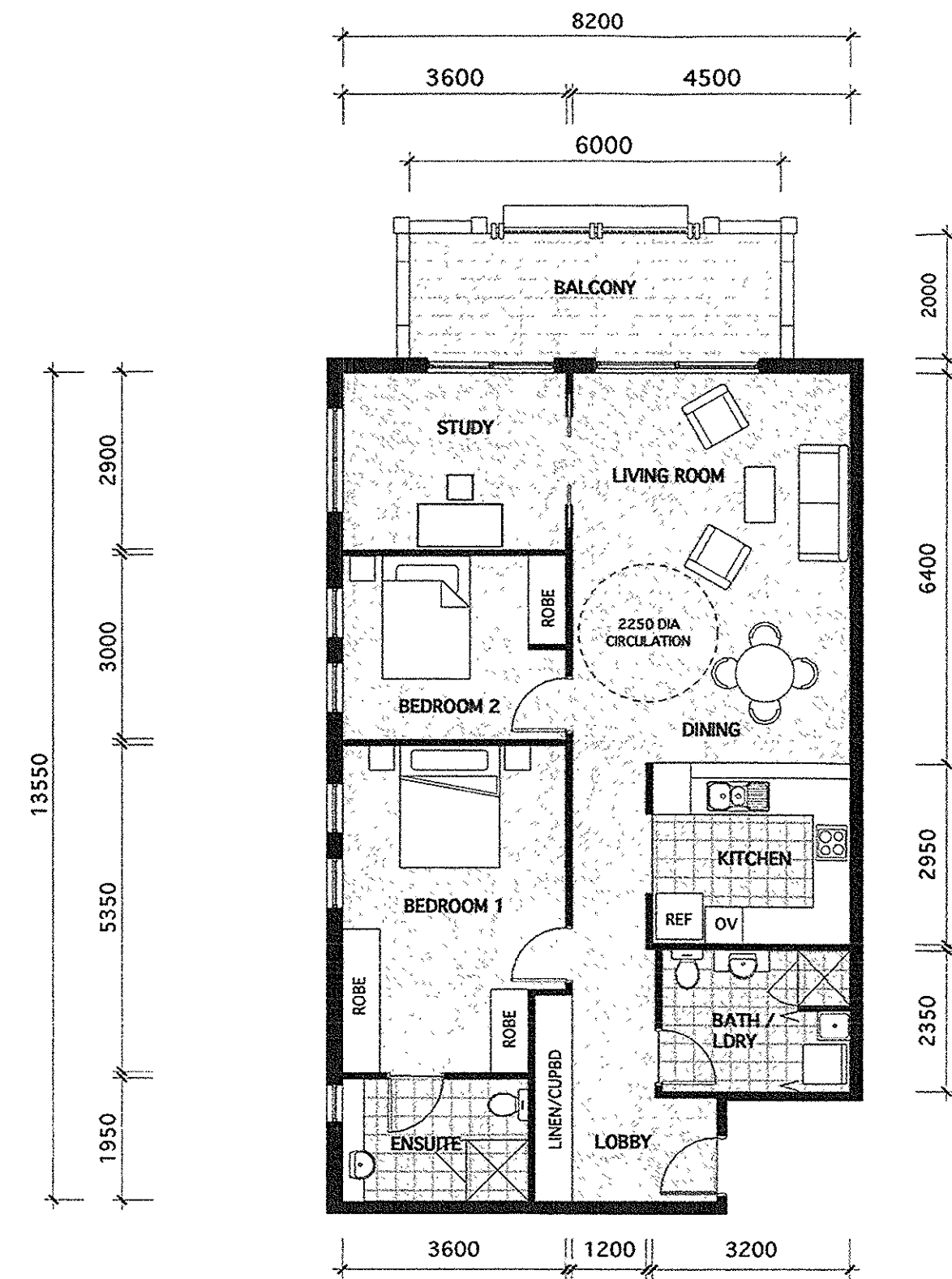


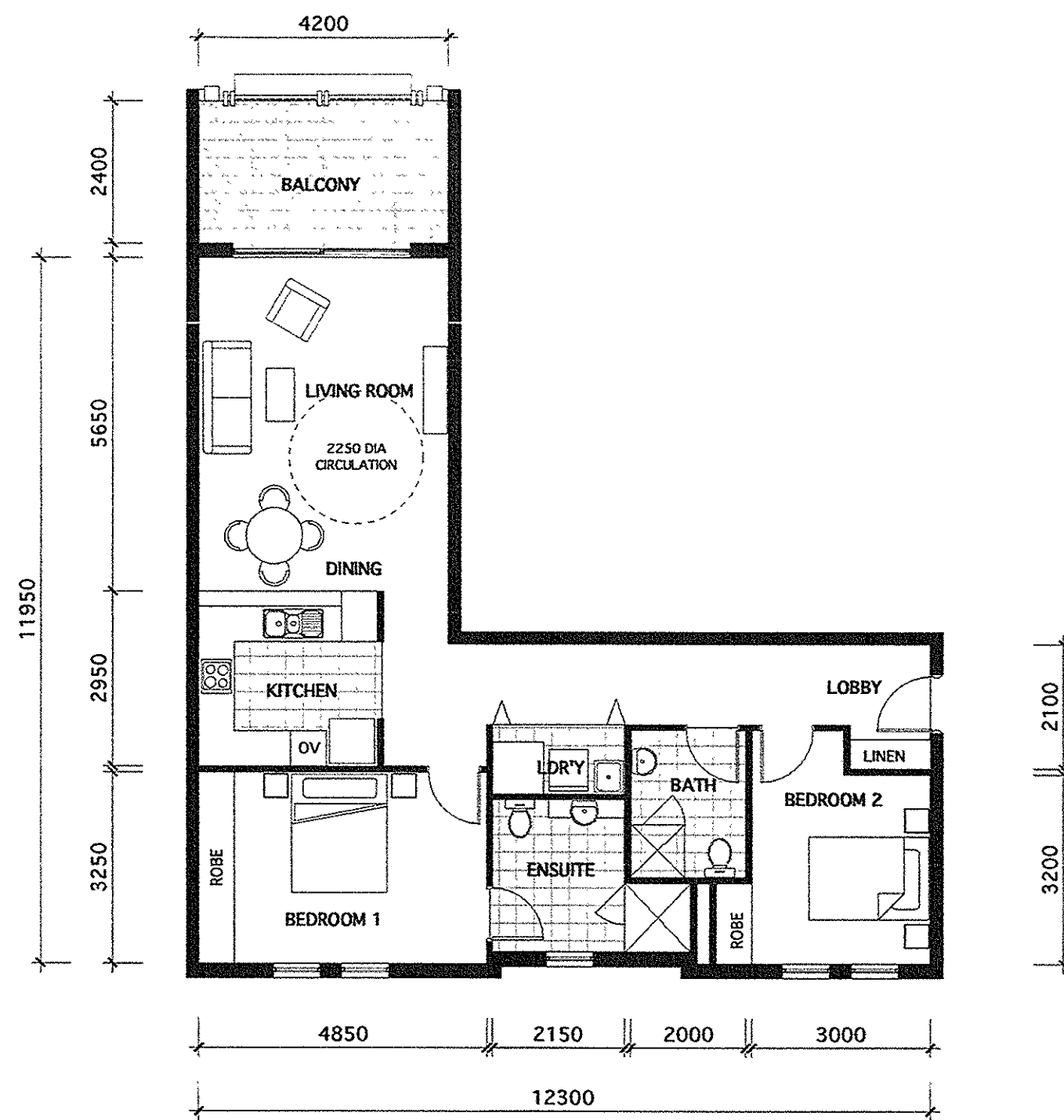
Type A - 2 Bedroom



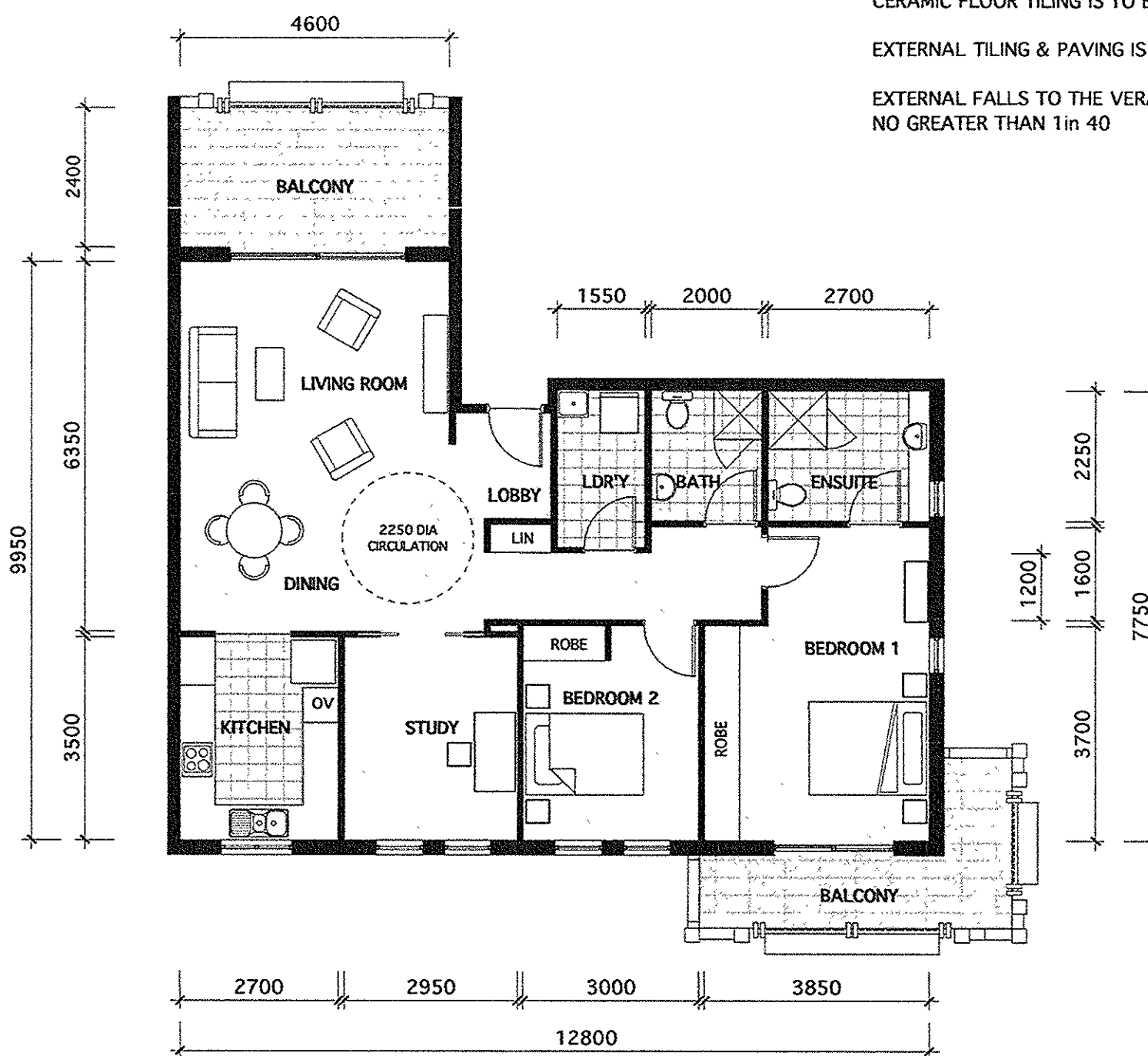
Type B - 2 Bedroom & Study



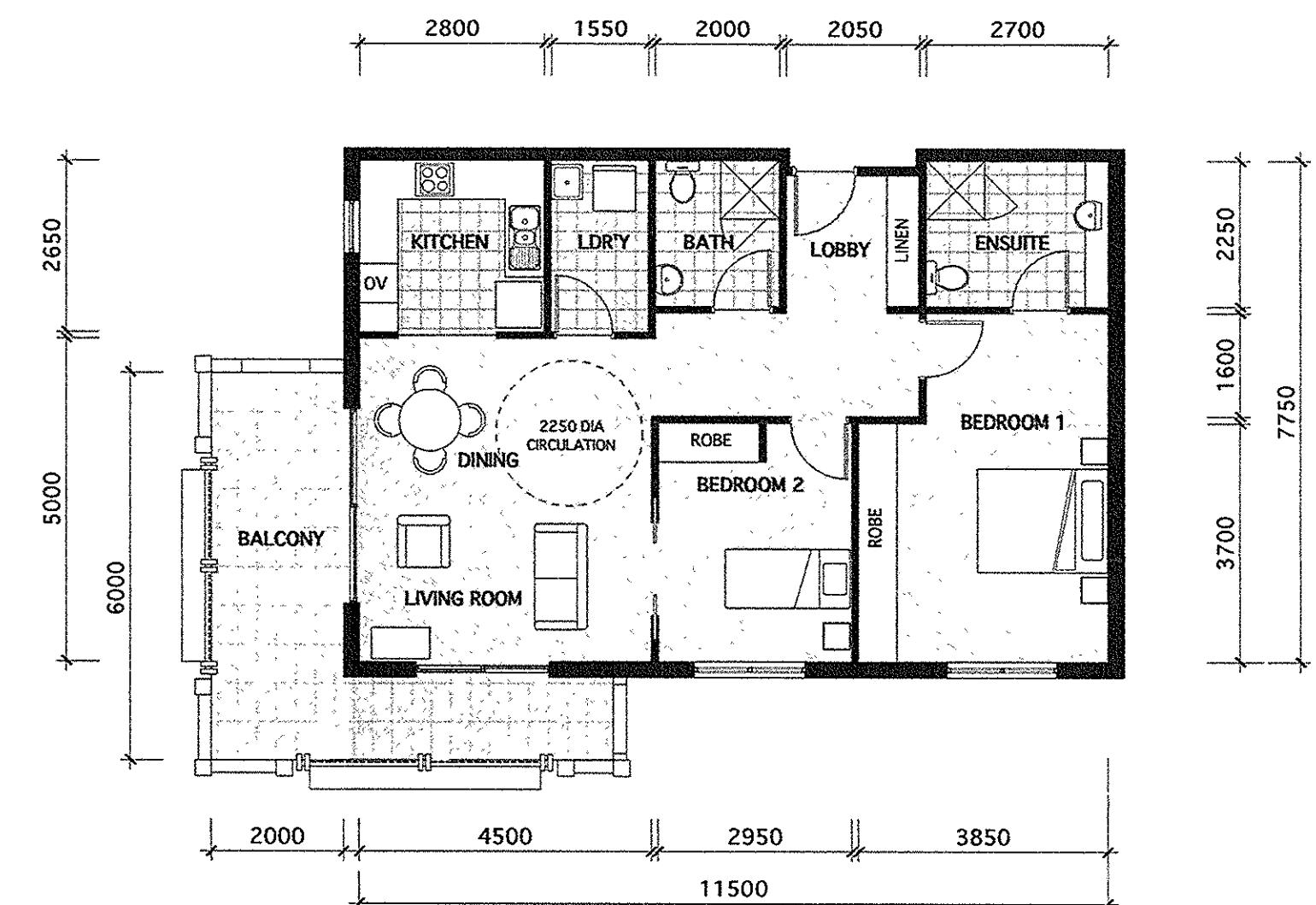
Type C - 2 Bedroom & Study



Type D - 2 Bedroom



Type E - 2 Bedroom & Study



Type F - 2 Bedroom

NOTE

HOUSE DESIGN TO COMPLY WITH THE STATE ENVIRONMENTAL PLANNING POLICY (HOUSING FOR SENIORS OR PEOPLE WITH A DISABILITY) 2004 - VERSION 2 MARCH 2011

THE KITCHEN, THE EN-SUITE (THIS IS THE ACCESSIBLE TOILET) AND LAUNDRY ARE TO COMPLY WITH THE SEPP, ACCESS AND MOBILITY CODE AS 1428.1 AND ADAPTABLE HOUSING CODE AS 4299

DOORWAYS ARE TO COMPLY WITH AS 1428.1

CERAMIC FLOOR TILING IS TO BE 'NOT SLIP' - REFER AS 1428

EXTERNAL TILING & PAVING IS TO BE 'NON SLIP' - REFER AS 1428

EXTERNAL FALLS TO THE VERANDAHS, PATIOS & ENTRIES ARE TO BE NO GREATER THAN 1 in 40

NOTE:

REFER TO APARTMENT BLOCK PLANS FOR VARIATIONS TO WINDOW CONFIGURATIONS AND ADDITIONAL WINDOWS